

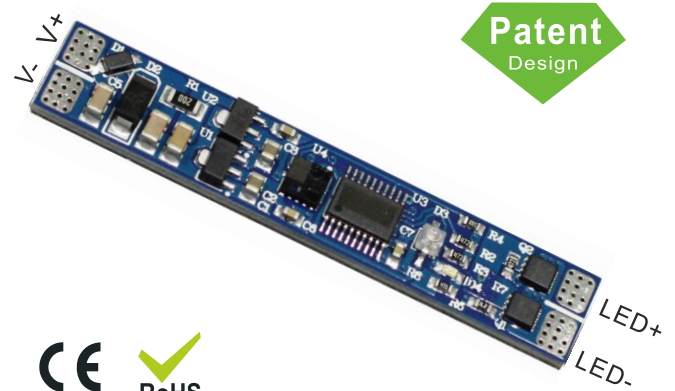
# Proximity Sensor Switch With Dimmer: PS002

*Interruttore Sensore Prossimità Con Dimmer*

**SKU: CL7135**

- 1, Dimension: 10x55mm.
- 2, Input voltage: 12-24VDC.
- 3, Current: 8A Max.
- 4, Detection Range:  $\leq 18\text{cm}$  (when there's no PC cover).
- 5, Turn ON/OFF the light when hand pass over the sensor within 18cm.
- 6, Hold the hand over the sensor more than 1 second, adjusting the brightness from 3% to 100%
- 7, With 0V memory function .

- V+ ----DC input positive
- V- ----DC input negative
- LED+ --- Output to LED Strip positive
- LED- --- Output to LED Strip negative



\* Images for reference only

## Product characteristic

The Proximity Switch(motion sensor) is designed to be used in LED Aluminum profile. It is dedicated for switching LED lights “on” and “off” and “dimming” without touching the switch. This sensor switch is with 0V memory function. The Proximity switch operates based on an active reflective photocell. The cyclical device sends a string of infrared impulses and measures the strength of the reflected signal. When a hand is placed closer to the sensor the infrared impulses reflect from the hand and bounce back to the sensor. If the strength of the signal is maintained on the appropriate level, the output of the dimmer will reverse its state. The infrared light is emitted on a definite frequency as a result the dimmer is resistant to signals coming from other sources such as infrared remote controls, lamps or sunlight. The bottom of the Proximity switch is equipped with tape that allows secure mounting of the switch and additionally cools down the switch when mounted into an extrusion.

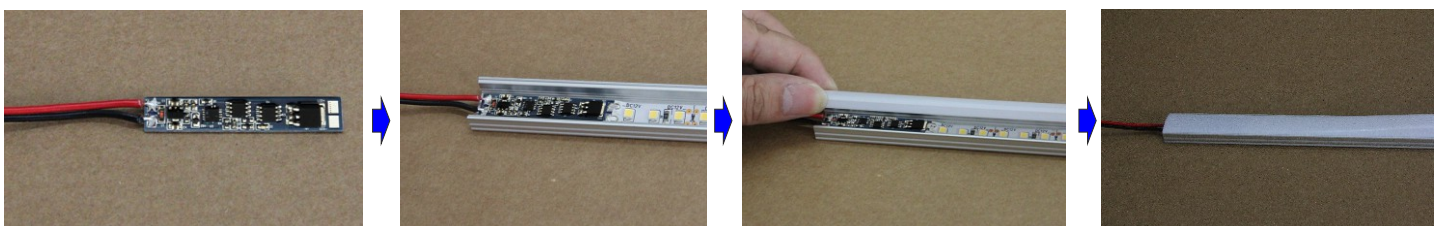
## Caution

- \* Avoid being exposed to the lamp or strong light outside the lamp.

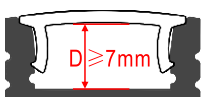
## Applications

The Proximity switch is dedicated for applications that require very high hygiene standards such as: laboratories, hospital operating rooms. The switch guaranties safety while turning the light on in the bathroom with wet hands or any other application where you may not physically want to touch the switch. The switch provides comfort for example while working in the kitchen as it allows for quick and secure triggering of lighting during work, often with having unwashed hands.

## Installation:



## Notice:



The distance from PC cover to the profile  $7\text{mm} \leq D \leq 50\text{mm}$ .

