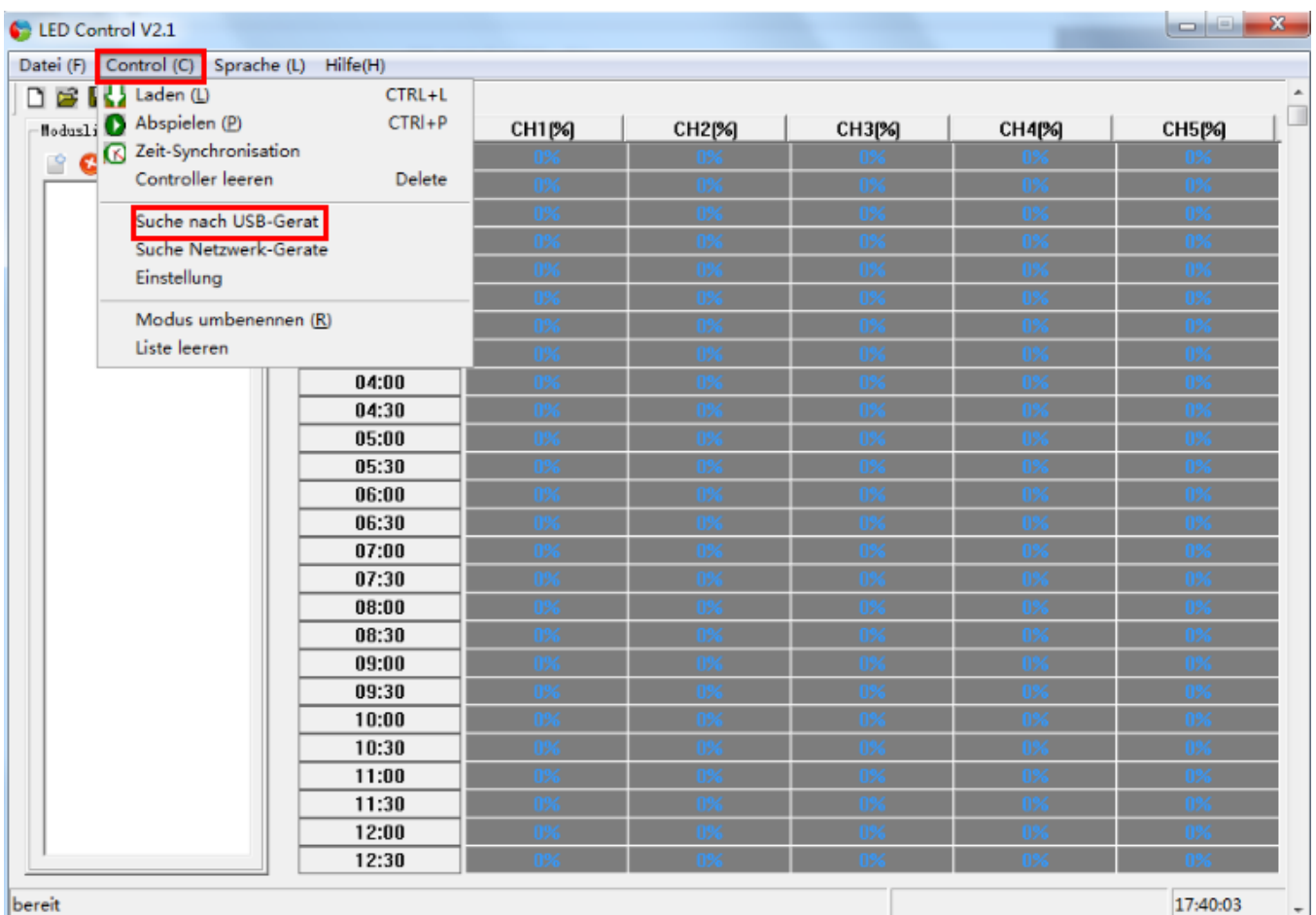


# TC421 With WIFI time programmable controller

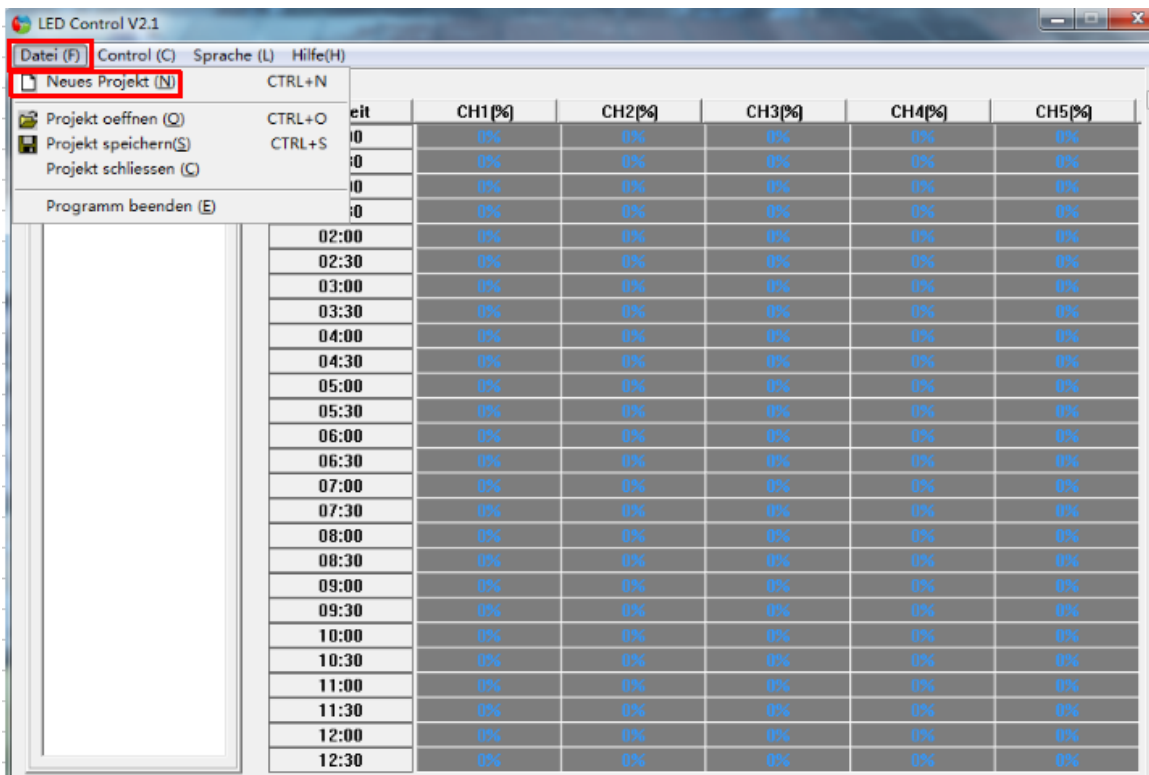
## Upper machine instructions

1. When using the controller on the computer for the first time or when the download mode cannot connect to the controller, the computer should be searched by the controller. Click on the "control" menu bar suche nach usb-gerat (if you have used the same controller on this computer before, you can use it without searching).



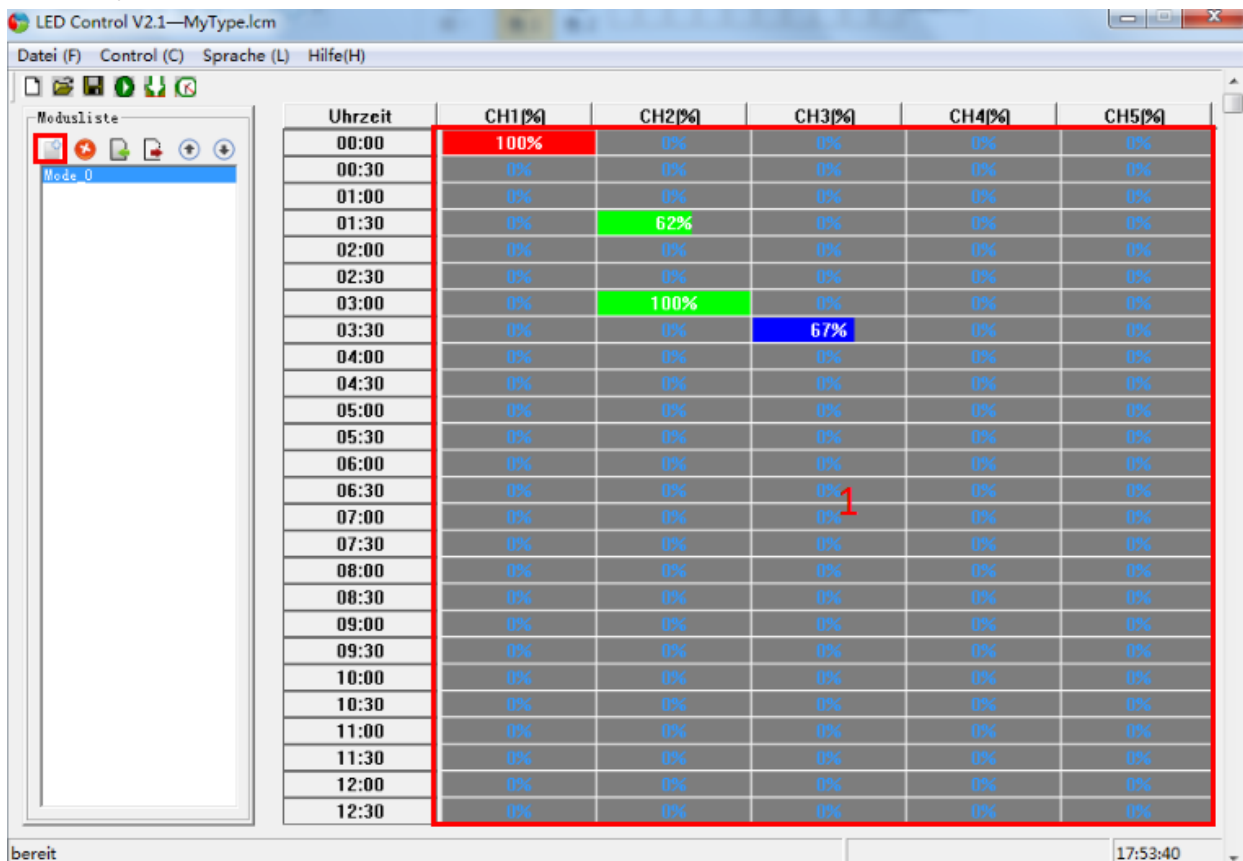
## 2.set new project

Click "Neues Projekt" under the "Datei" directory to create a new project.



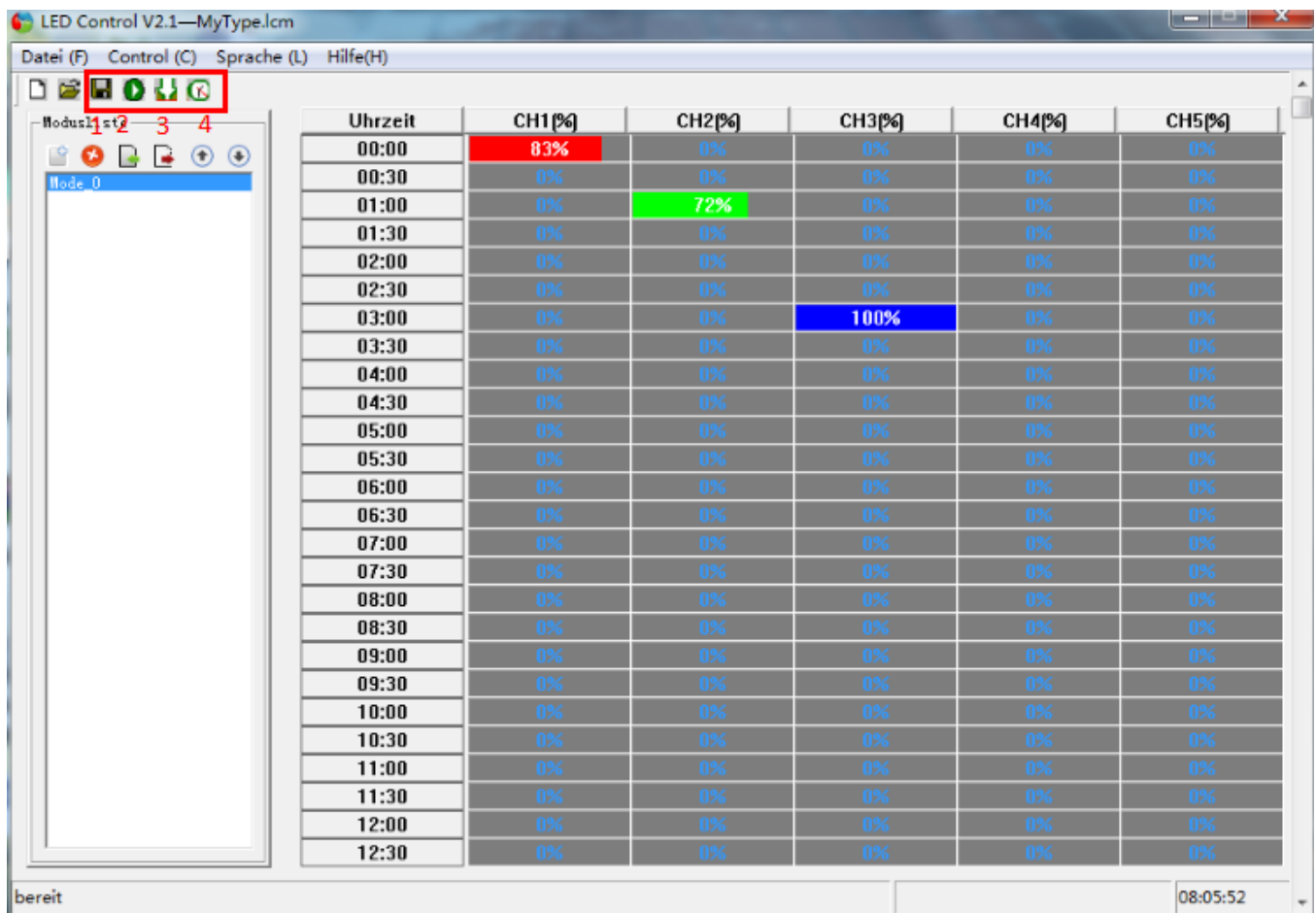
## 3.Set up a new project

Click on the new mode icon to create a new mode, and then the mode adjust the area "1" to set the time and mode types.



#### 4. Download the mode to the controller

When you have set the mode, click "1" to save the set mode, click "4" to calibrate the time of PC and controller, and click "2" to browse the mode of the current setting. Click "3" to download the set mode to the controller.



#### 5. File copy note

The project file and the mode file need to be copied together, otherwise the copy file is invalid. as follows:



The above picture MyType.lcm is the project file, and Mode\_x.lmf is the mode file.

**Note: the PC side does not support adding the controller to the router. If you want to add the controller to the router, please add and operate the controller via the mobile phone.**