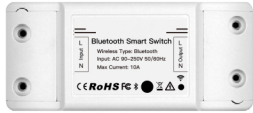


BLUETOOTH SMART SWITCH

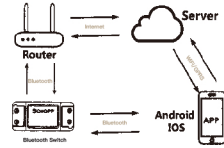
MS-101B: Bluetooth/10A
MS-101B-16A: Bluetooth / 16A



Parameter
Power Supply: 90V~250V AC
Max. Load: 2200W/10A or 3520W/16A
Wireless Type: Bluetooth
Material: ABS V0
Size: 88 * 38 * 22mm

Check list before using the device

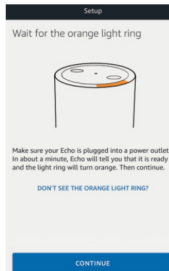
- 1.Enable your smart phone Bluetooth on
- 2.Bluetooth hub required for connection when wireless remote control needed.



2. Click the menu on the left corner-click "Settings"; choose "Set up a new device" (choose a device,like Echo) Note: When

the below page appears, long press the small dot on your Echo device until the light turns to yellow. Then click Continue on App.

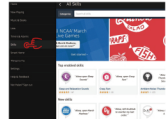
Note: at this moment, the mobile phone can not open a variety of WPN software.



3.Choose your own WiFi and wait for a few minutes. After an introduction video, click next step, it will enter Home page automatically.
Now the Echo has connected to Wi-Fi successfully.

Enable Smart Life Skill in Alexa APP

Choose "Skills" in the options bar, and then search "Smart Life" in the input box.



Select Smart Life in the search results,and then click "Enable Skill".



Download Smart Life APP



Please scan the QR code or download Smart Life on App Store or Google Play.

User guide

Bluetooth link method

- 1 Start with "Smart Life"App.
 - 2 Register an Smart Life Smart account.
 - 3 If you have Smart Life account,just log in.
 - 4 Power up.
- ON/OFF operating principle:
The connected appliances work/stop through live wire power on/off.



4.1 Appliance wiring instruction.



4.2 Ceiling lamp wiring instruction.

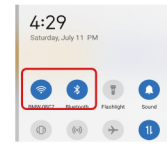


4.3 Light wiring instruction.



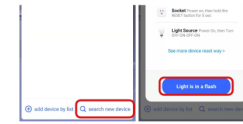
* Note: The Bluetooth Switch must be powered up by N and L wires.

5 Make sure your phone is connected to Wi-Fi and Bluetooth.



6 Press and hold the button for about 7 seconds until the blue LED blinks fast.

7 Click " Search new device" when enter the hub, and confirm your module is blinking fast.

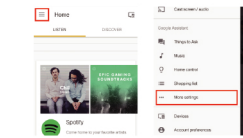


8 After finding the device you need,click the button "DONE"

- Have registered your Google Account.
- Have paired Light Switch with Smart Life App and named it with a recognizable name.
- Have finished setting up Google Home.

STEP 1

Open Google Home App; tap "≡" on the upper left corner; select "More Settings" to enter the next interface.



STEP 2

Choose "Services" in the options bar and select "Smart Life"to enter the next interface.



9 You can edit the name of the device and then finish your operations by clicking "DONE"



Added successfully
Light Switch (Smart Life) has been added to your Smart Life account.

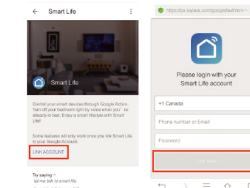
Reset Method

Press and hold the button for about 7 seconds until the blue LED blinks fast.



STEP 3

Tap "Link Account", then sign in your Smart Life Account.



STEP 4

Tap "Link Now", after your Smart Life account has linked to Google Assistant, the smart devices will automatically appear.

TROUBLESHOOTING

Q: How to set indicator light as rapid flashing?

- 1 Power on device.
- 2 Hold the reset button for 7s.
- 3 Confirm indicator light is now rapidly flashing.

Bluetooth Switch Module fails to be connected:

- 1 Maybe you have not turned on your phone Bluetooth.
- 2 Bluetooth Switch Module is too far away from your Bluetooth hub, please take it closer.
(for wireless control when the hub required only)

Set your Echo speaker by Alexa APP

1. If you have finished to install Smart Life then open Amazon Alexa App; sign in your Alexa account and enter password.

Command the Device through Your Voice

After the above operation is successful, you can control the device via Google Home.

Firstly, you need to say "OK Google, talk to Smart Life" to wake up the Smart Life. Then you can control the device by instructions like these:

- Turn on the Light Switch
- Turn off the Light Switch

Note

After Smart Life has been awakened, you can say "Cancel" or "Stop" to exit Smart Life or say "Nothing" when you hear "What can I do for you." Then you can say "OK Google, talk to Smart Life" to start voice control.