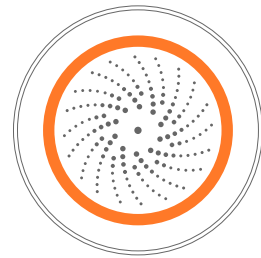
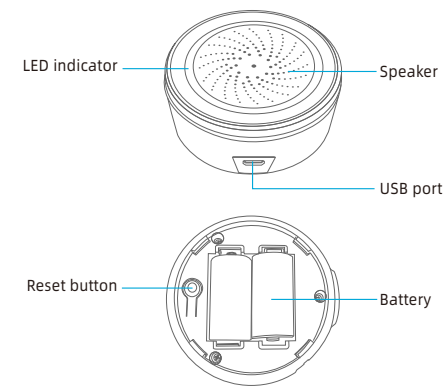


SIREN ALARM USER GUIDE

ZIGBEE



Product Configuration



Feature & Specifications

Trigger alarm; Make sound and light
 Power supply: 5V/1A
 Battery: CR123A-3V X 2
 Sound: 90db max within 1 meter
 Sound type: 18
 Storage temperature: 0°C ~ 50°C
 Storage humidity: 0% ~ 80%
 Size: 68 mm x68 mm x33mm
 Alarm duration: 0-1800s
 Product weight: 65g
 Wireless distance: 55M
 Wireless frequency: 2.4GHz
 Communication protocol: Zigbee 3.0
 Network protocol: Zigbee IEEE 802.15.4
 Size: 68mm x 68mm x 32mm

Remark: equipment shipped without batteries;

LED State

Device Status	LED State
pairing mode	Indicator blinks twice every second
reset	hold down the reset button for 6 seconds
alarm	indicator light flashes
standby	indicator goes out

NOTE:
 1. Reset the device before adding it
 2. When switching power supply and modifying Settings, there will be display delay;
 3. Zigbee device must work with Tuya zigbee controller;
 4. The device does not sleep and reports power data from time to time
 5. USB power supply display 100% power;
 6. The main interface will not be changed when alarming;
 7. Setting other parameters will prolong the alarm time when alarming;
 8. After the device is deleted from the app, the device will not enter into pairing mode.

Get Started

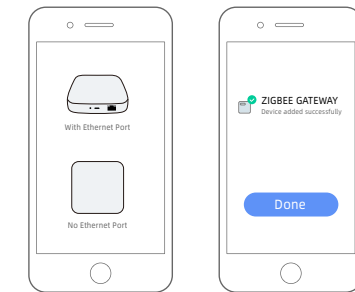
1. Download APP
 Download the "Smart life" app from APP Store or Google Play to your mobile.



2. Register and Login
 A. Launch the "Smart life" app.
 B. To register, enter your mobile phone number or email address, create a password, then login to the app.
 C. Login if you have an account already.

Add ZigBee Controller

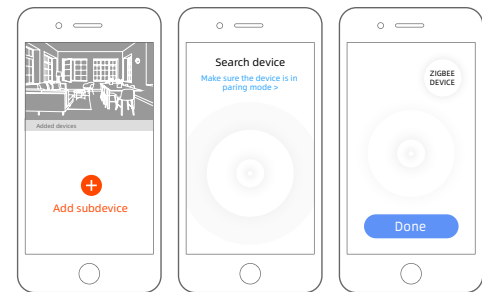
Add Tuya ZigBee controller first and operate with the controller user manual. (Pls notice the wired and wireless version controller)



Note: The diagram is for reference only. (UI maybe different in other APP version)

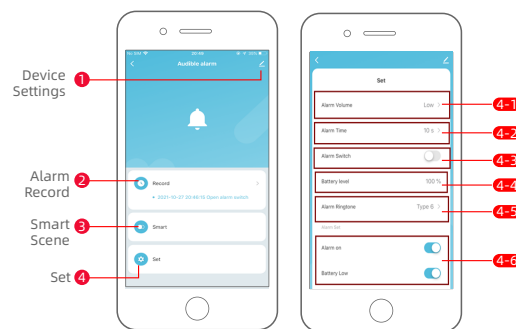
Add Device

Add the ZigBee device. (Reset first before configuration)



Note: The diagram is for reference only. (UI maybe different in other APP version)

Main User Interface



Note: The diagram is for reference only. (UI maybe different in other APP version)

- 4-1. **Alarm volume:** high, medium and low;
- 4-2. **Alarm duration:** 0s-1800s;
- 4-3. **Alarm switch:** manually switch alarm;
- 4-4. **Battery power:** battery power display percentage;
- 4-5. **Alarm bell:** There are 18 kinds of alarm bell, which can be selected freely;
- 4-6. **Alarm management:** alarm prompt switch and low power prompt switch.

Advanced Features

You can experience the various advanced features of the device with the app, just try and do it yourself.

- 1. **Timing alarm**
- 2. **Alarm record**
 Record alarm time and alarm duration)

OTHER FUCTION

Linkage alarm setting
 To connect two Sensors via scene setting.

Device sharing
 Allow others to control the device

Push notification
 Open/close push notification

Remove device
 Restore default settings; Delete and add the device again to clear the record by APP.



Smart Home Device contains WiFi smart device, Z-Wave device and ZigBee device, give you more choices to create a new smart life.

Wide application on the living room, kitchen, bedroom, bathroom, garage, garden, yard or basement of your home, office, warehouse, chain store...

Make life smarter and more convenient.



SMART HOME DEVICE