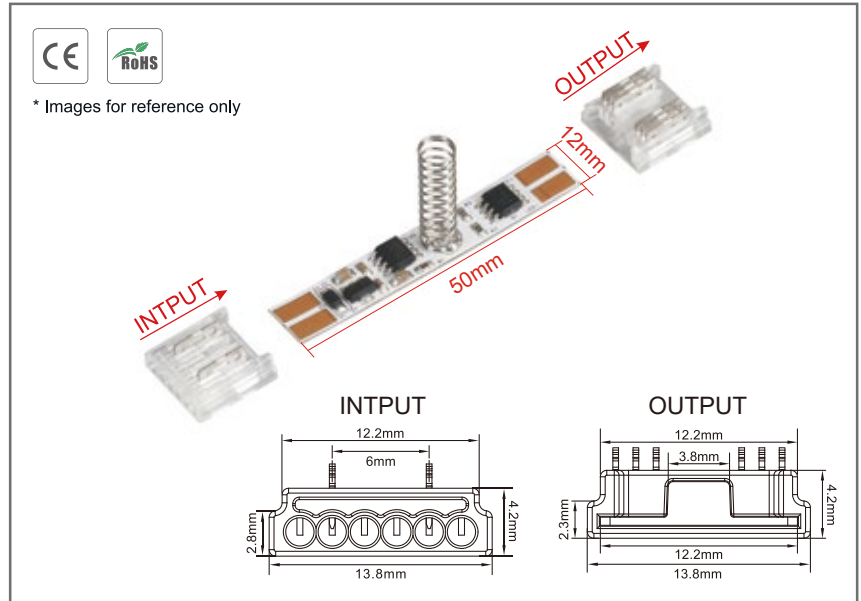


# Flexible PCB Memory Touch Switch Dimmer CL2290F12

## Functions

- Touch switch ON/OFF with dimming and memory.
- Input Voltage: 12V-24V DC.
- Input wire outer diameter: 1.9mm MAX
- Output Voltage: 12V-24V DC.
- LED Strip Width: 12mm
- Input Current: 3A.
- Load around 36W for 12V, and 72W for 24V.
- Dimension: 50\*12mm.
- Height of Spring: 20mm.

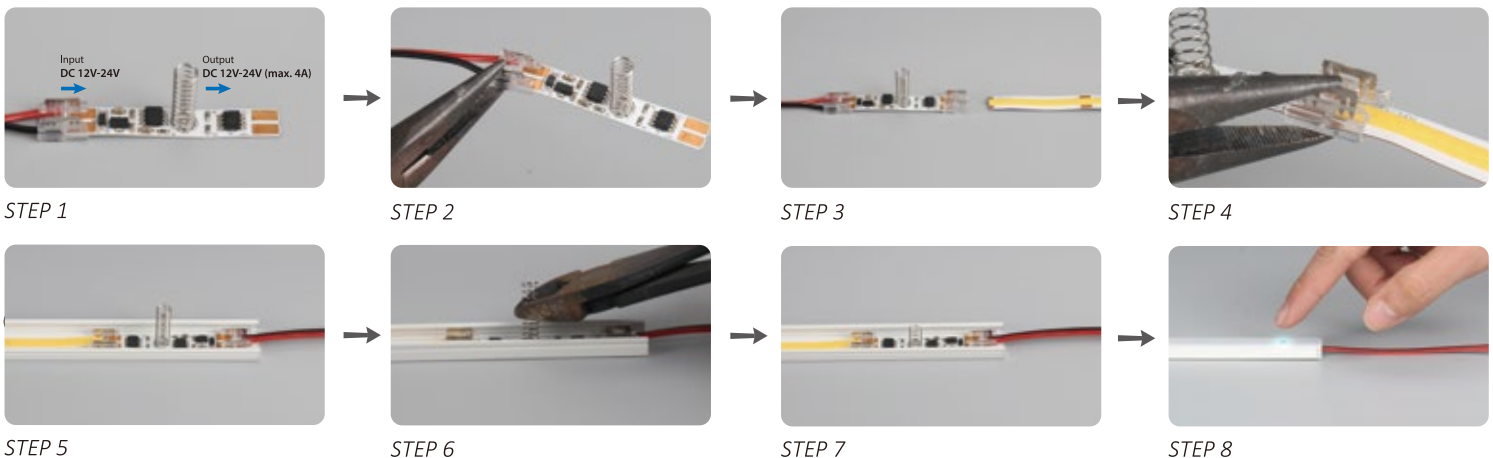
V+	---	DC input positive
V-	---	DC input negative
LED+	---	Output to LED Strip positive
LED-	---	Output to LED Strip negative



## Operations

- The conductive spring needs to be covered by insulation material such as glass, plastic or ceramic material, thickness  $\leq 3\text{mm}$ .
- With memory internal switch on/off and dimmer:
  - 1) Originally "OFF" when the power is connected.
  - 2) Quick touch (time is less than 550ms) can turn the light on and off. One touch to turn on; Another touch to turn off. The lamp is 90% bright when it is on.
  - 3) Hold on touching (time is above 550ms) can adjust the brightness endlessly; It will reduce the brightness endlessly to the minimum in 3 seconds holding on when the light on.
  - 4) Quick touch and hold on touching can be chosen anytime without any collision.
  - 5) This sensor will memorize the status of the dimming in DC12V-24V.

## Installation Steps



Note:

- (1) Height Requirement of Spring : Cut the Spring 5mm above the PC Cover. It is easy to cause a short circuit if the spring is too long with the PC cover is installed.
- (2) The function / program can be customized, made different needs, such as longer time for stay on, etc.